

# BELLA VIDA

A T E A G L E W O O D

COMMUNITY INFO PACKET



## COMMUNITY HIGHLIGHTS

Bella Vida is a charming community located in the foothills east of North Salt Lake, overlooking the Great Salt Lake. Its mountain-themed homes are adorned with rustic wood and stone details, accentuating their beautiful surroundings. The bordering mountain ridge welcomes exploration by day, while front porches feature spectacular sunset views over the lake by night. This neighborhood is perfect for empty-nesters who want a beautiful home without the responsibility of maintaining the grounds. Landscaping, maintenance, snow removal, pool-side relaxation, and an included technology package are just a few perks this community offers. Residents will love the close-knit atmosphere and luxury lifestyle that awaits at Bella Vida.

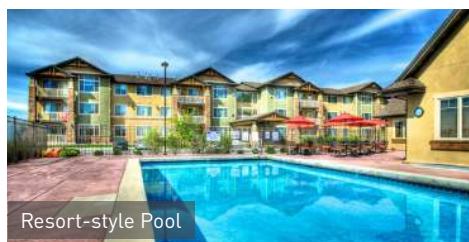
### COMMUNITY



Clubhouse



Beautiful Views



Resort-style Pool

PLAN TYPE	PLAN	FINISHED SQ FT	TOTAL SQ FT	BED	BATH	PRICE
Smallest	Waterton	1,434	2,791	3	2	\$354,999
Largest	Northstar	2,542	3,635	4	2.5	\$394,999

SCHOOL DISTRICT	ELEMENTARY SCHOOL	MIDDLE SCHOOL	HIGH SCHOOL
Davis	Orchard	South Davis	Woods Cross

MODEL HOME TYPE	ADDRESS	HOA MANAGEMENT	HOA FEE
Cortina	353 Bella Vida Drive North Salt Lake, UT 84054	RedRock HOA Management	\$185/month

All information including, but not limited to, pricing, renderings, and square footages are approximate and are subject to change at anytime without notice. Consult a Candlelight Homes Sales Representative for details.



**QUESTIONS? Ask Andrea & Dani**  
801.960.2751 | [Sales@CandlelightHomes.com](mailto:Sales@CandlelightHomes.com)





AT EAGLEWOOD

## COMMUNITY MAP



Candlelight Homes<sup>™</sup>  
A LENNAR COMPANY

801.960.2751

Information on this flyer is approximate and subject to change at any time.  
See Sales Representative for details.

## INCLUDED FEATURES

### Smart Home Features

- Nest Learning Thermostat
- Ring Video Doorbell Pro
- Kevo Touch-to-Open Smart Lock
- LiftMaster Garage Door Opener with MyQ Technology

### Kitchen Features

- Whirlpool Self-Cleaning Range (Stainless)
- Whirlpool Dishwasher (Stainless)
- Whirlpool Microwave (Stainless)
- Maple or Oak Cabinets with Flat-Panel Door
- Granite Countertops
- 5 Can Lights
- 8" Stainless Steel Sink with Disposal
- Water Line to Refrigerator
- Integra Chrome 67315C Faucet
- Tile Flooring

### Bath Features

- Moen Chateau Chrome Faucets
- Porcelain White Sinks
- One-Piece Fiberglass Tub / Shower Surrounds
- Maple Cabinets with Flat-Panel Door
- Tile Flooring
- Bar Lights

### Lighting Features

- Brushed Nickel or Oil-Rubbed Bronze Lighting Package
- Two-Bulb Melon Light Fixtures

### Energy Efficiency

- 2" x 6" Exterior Wall Framing
- R-19 Fiberglass Wall Insulation
- R-38 Blown-In Ceiling Insulation
- Central Air Conditioning
- 93% Efficiency Natural Gas Furnace
- Low-E Energy Efficient Dual-Pane Windows

### Other Interior Features

- 9' Ceilings on Main Floor
- Combination Smoke / Carbon Monoxide Detection System
- TV / Data Combo
- Colonial Base and Casing with Six-Panel Doors
- Wood Closet Shelving in Bedroom Closets, Pantry and Coat Closet
- Shaw Red Bud—Shaw's Home Foundation Gold Line Carpet
- Tile Flooring in Laundry Room, Entry, Dining Room and Mudroom
- Old World Drywall Texture
- Rounded Drywall Corners
- 40 Gallon Water Heater
- PEX Anti-Corrosion Plumbing System
- Satin Nickel or Oil-Rubbed Bronze Hardware

### Exterior Features

- Fiber Cement Board with Stone Accents on Front
- Aluminum Soffit and Fascia
- Full Coverage Rain Gutters
- Architectural Shingles
- 8' Garage Door with Opener
- 2 Freezeless Exterior Hose Bibs
- Satin Nickel or Oil-Rubbed Bronze Exterior Door Knobs and Hinges
- Exterior Weatherproof Electrical Outlet
- Full Landscaping
- Exterior Wood Beam Accents
- Exterior Recessed Lights Centered on Columns
- Composite Decking

### Paint

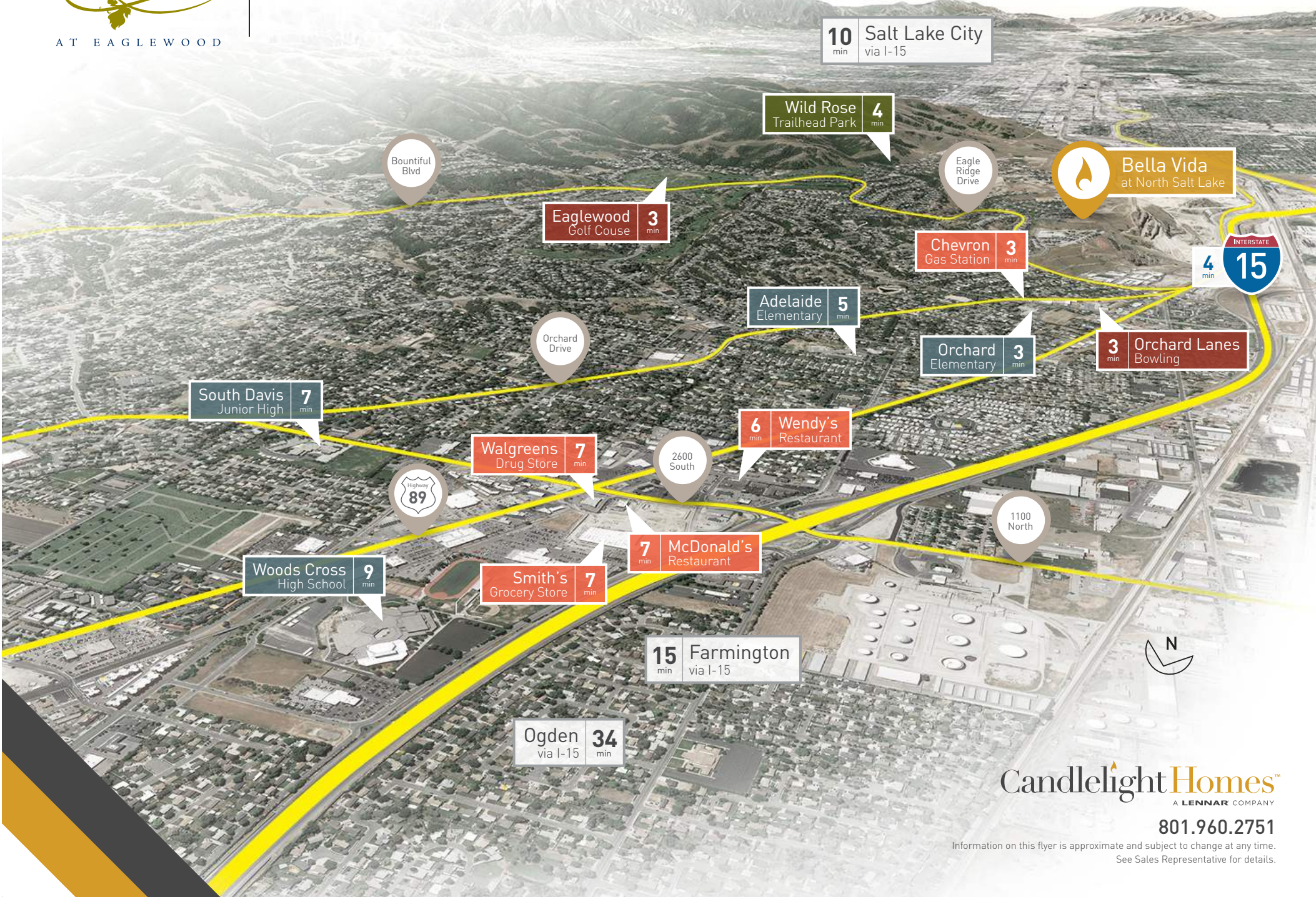
- One-Tone Interior Paint — Satin Sheen

*Note: All information is approximate and subject to change at anytime without notice. Consult a Candlelight Homes Sales Representative for details.*





# NEIGHBORHOOD MAP



**Candlelight Homes**  
A LENNAR COMPANY

801.960.2751

Information on this flyer is approximate and subject to change at any time.  
See Sales Representative for details.



## DRIVING DIRECTIONS

### South from I-15

- From I-15 southbound, take Exit 314 to West Center Street
- Turn left onto West Center Street
- Turn right onto South Main Street/US-89
- Turn left onto Eagle Ridge Drive
- At the traffic circle, continue straight
- Turn right onto Edgewood Drive
- Turn right onto Bella Vida Drive
- Bella Vida is straight ahead

### North from I-15

- From I-15 northbound, take Exit 312 to merge onto US-89/Beck Street
- Turn right onto Eagle Ridge Drive
- At the traffic circle, continue straight
- Turn right onto Edgewood Drive
- Turn right onto Bella Vida Drive
- Bella Vida is straight ahead

